

PROJETO CABUÇÚ

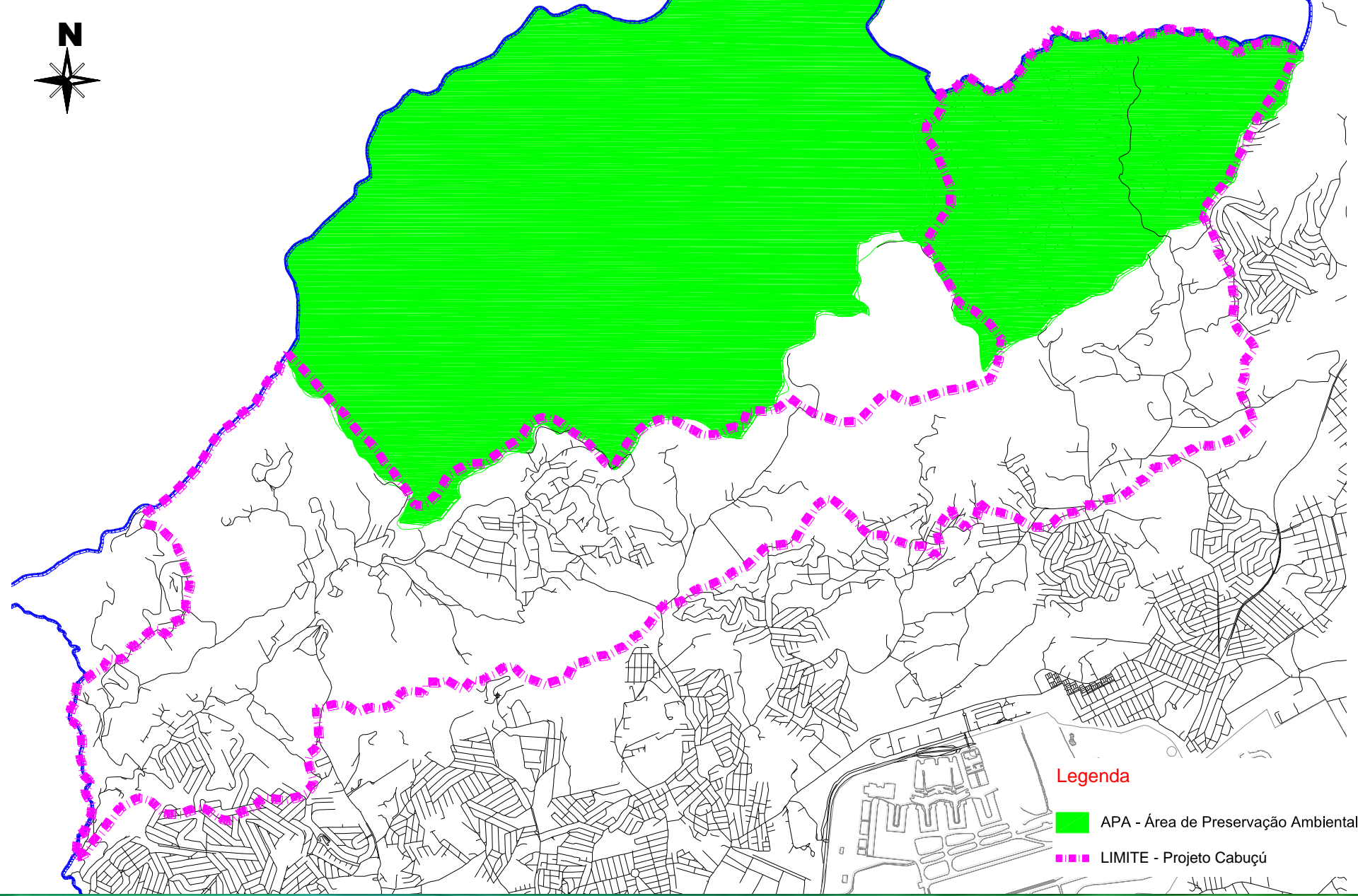
Prefeitura Municipal de Guarulhos

Secretaria de Desenvolvimento Urbano

Colaboradores:


UNG – Universidade de Guarulhos

ONG – Projeto Cabuçú

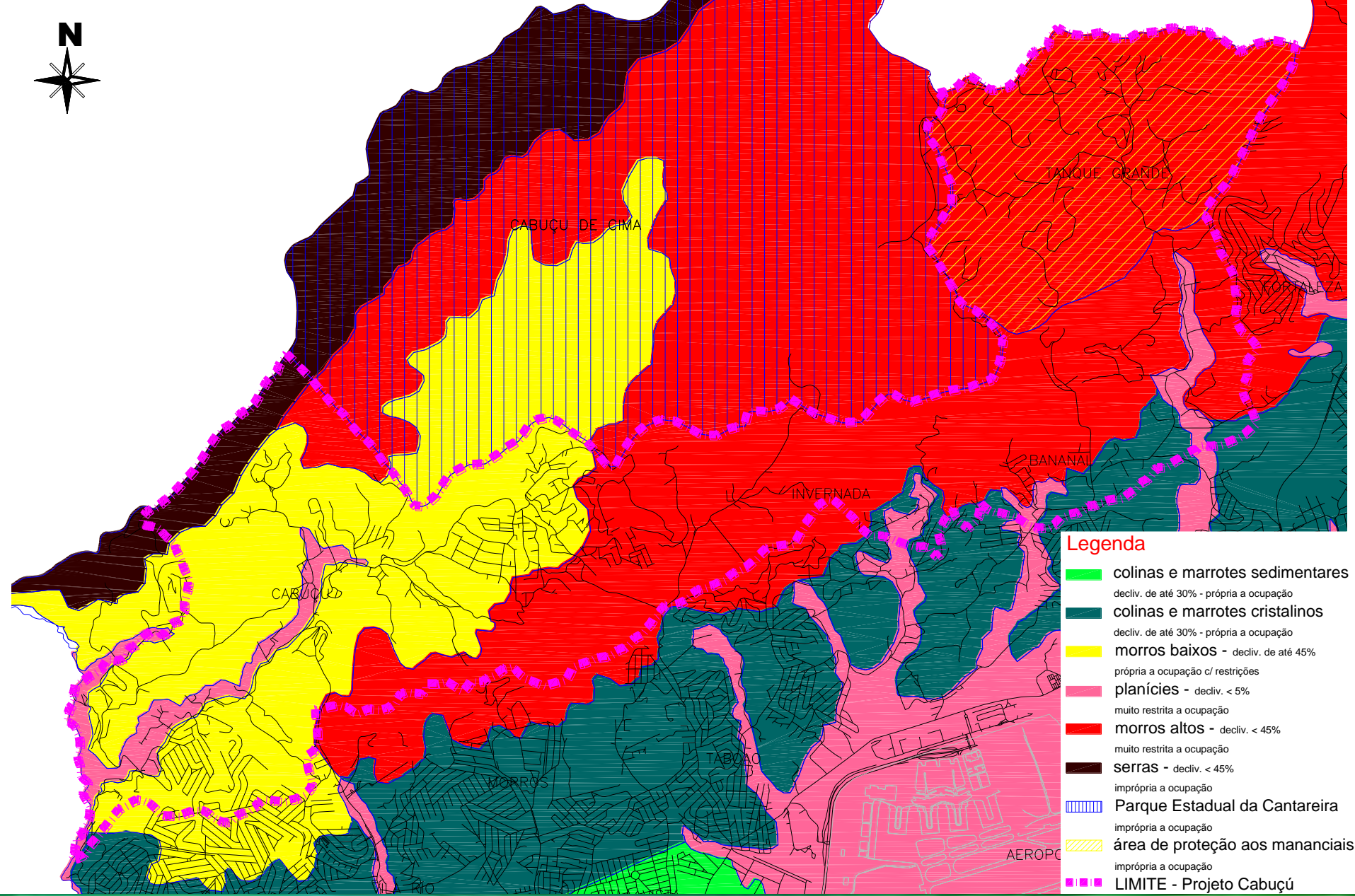


Legenda

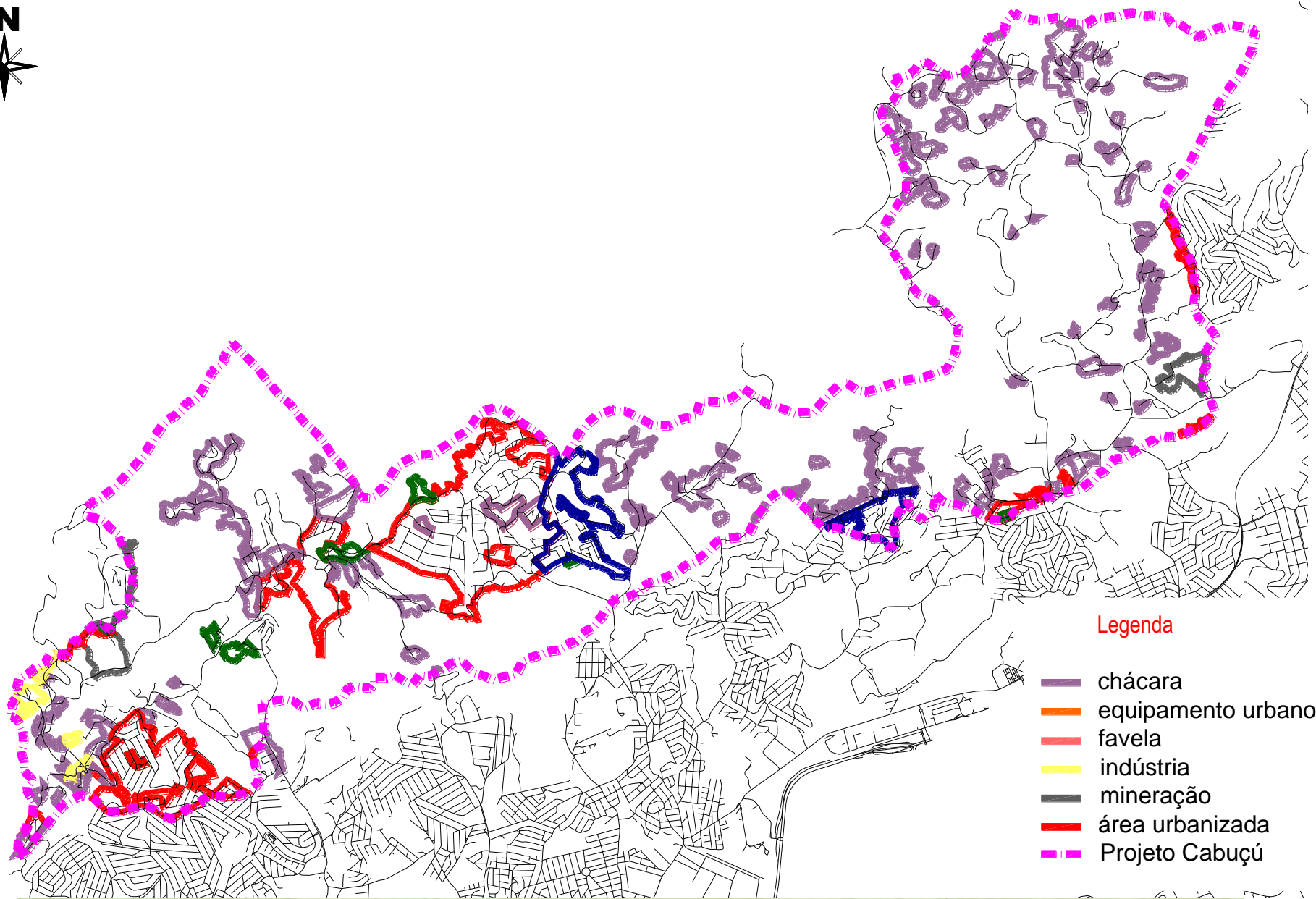
 APA - Área de Preservação Ambiental

 LIMITE - Projeto Cabuçu

Apa – Área de Preservação Ambiental

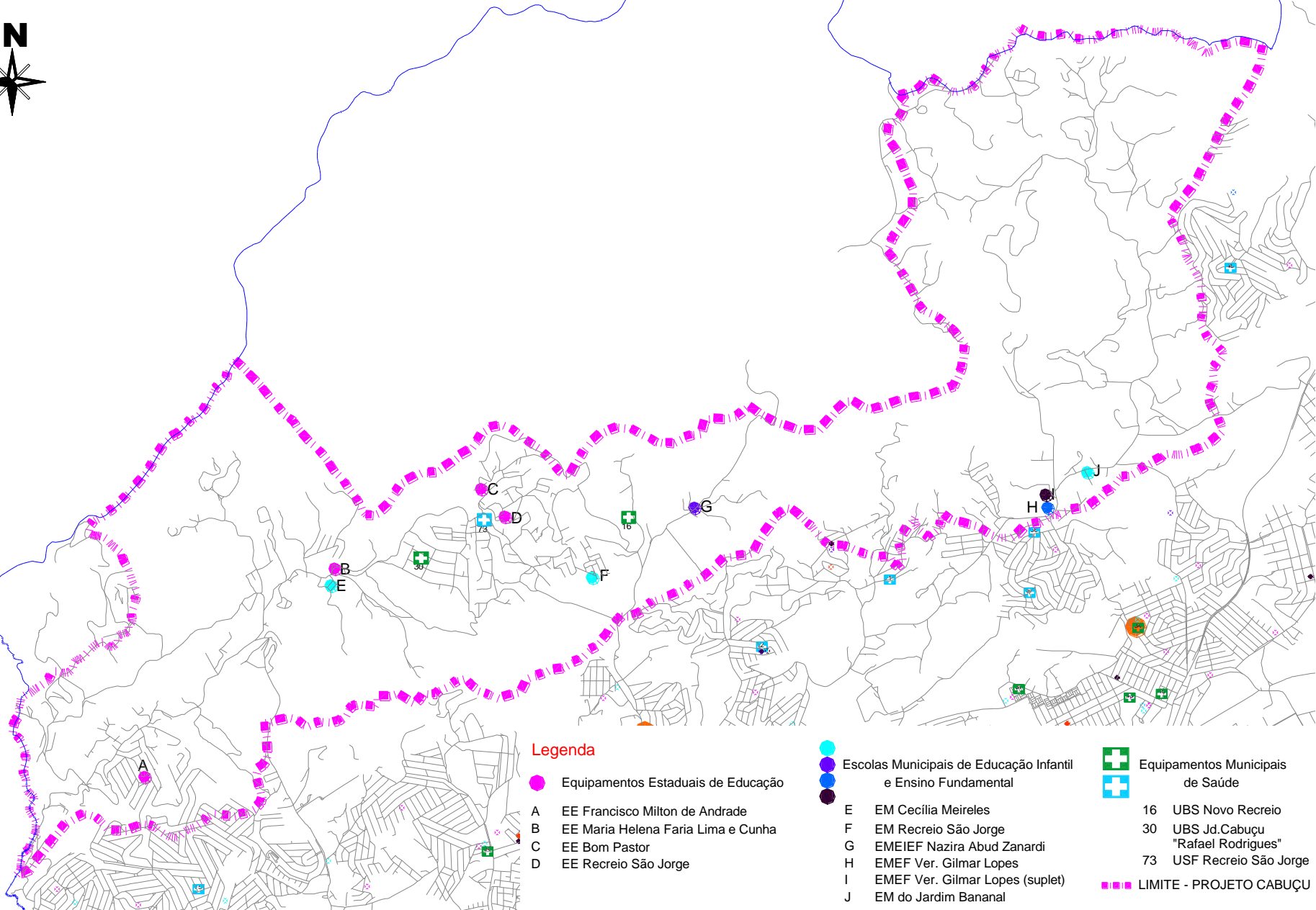


Aptidão à ocupação

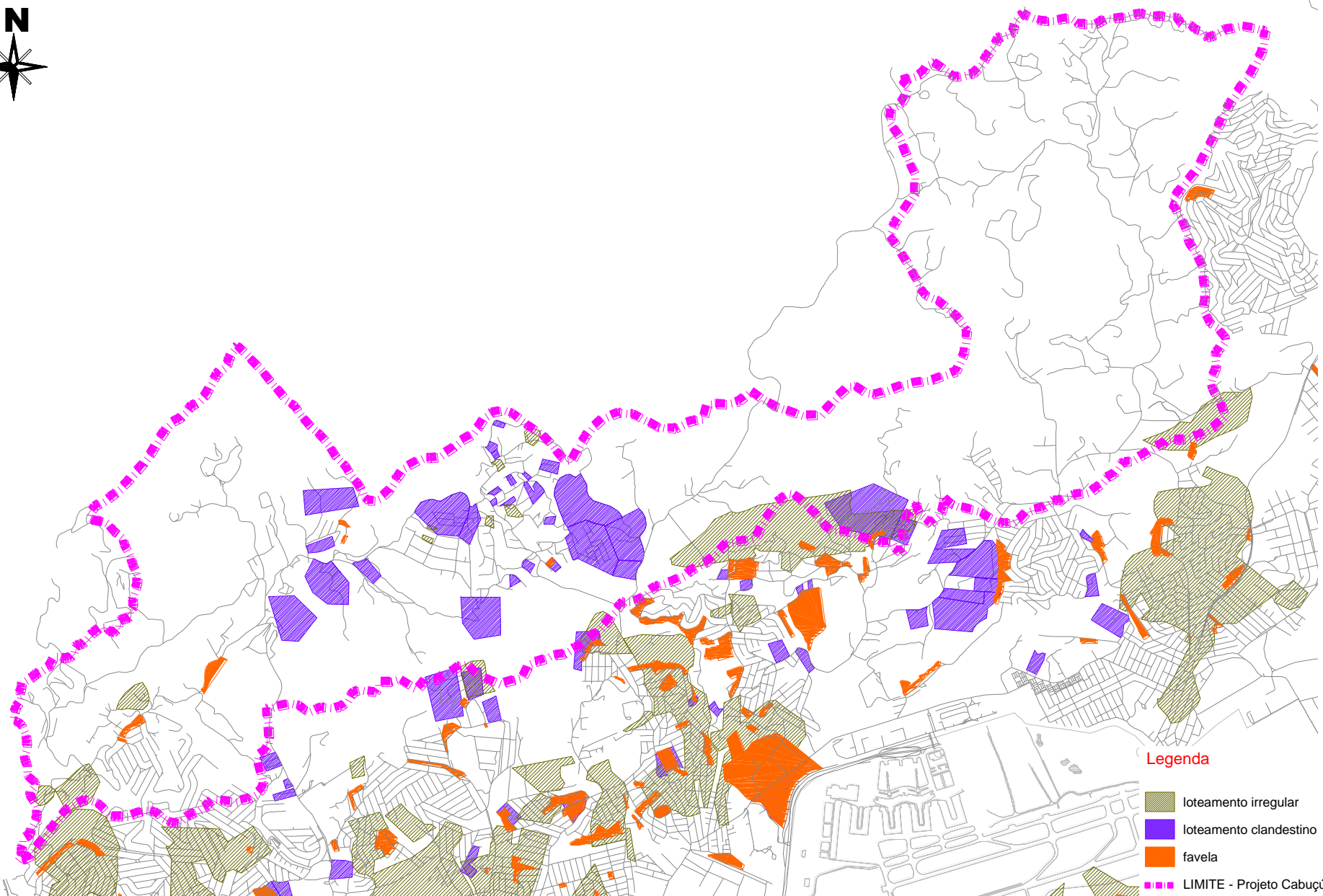


Uso do solo real

Fonte: EMPLASA



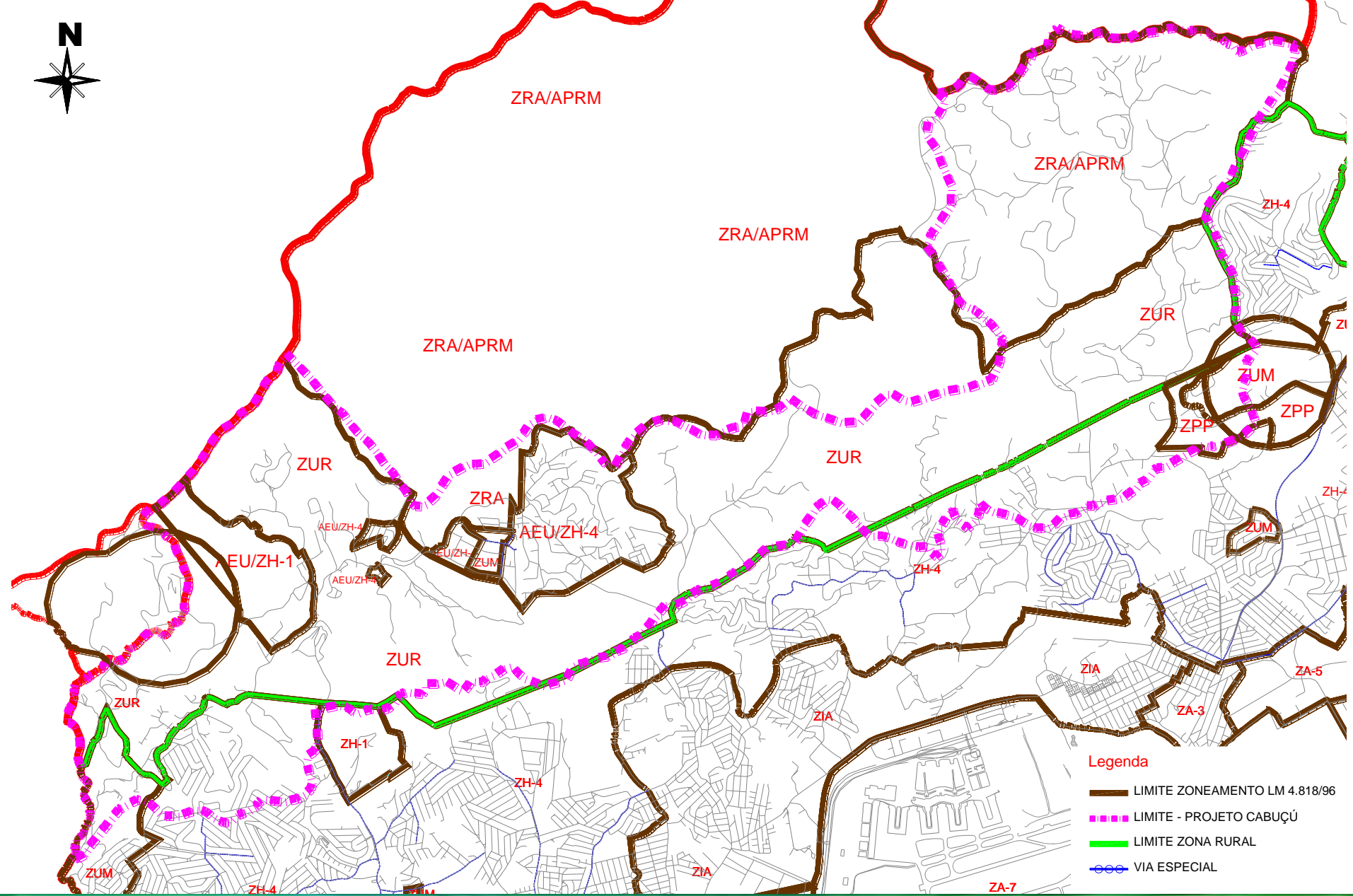
EQUIPAMENTOS COMUNITÁRIOS



Legenda

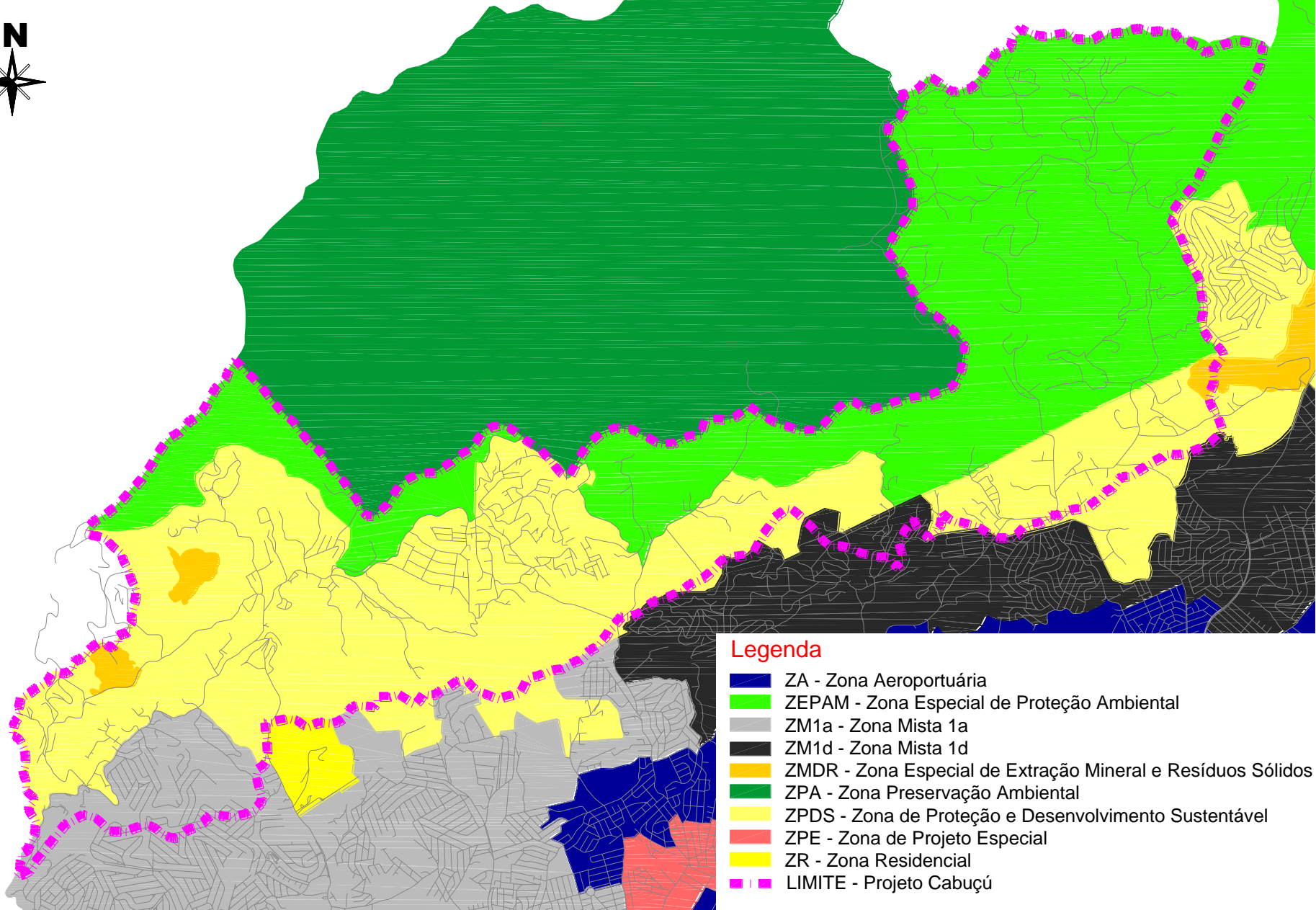
- loteamento irregular
- loteamento clandestino
- favela
- LIMITE - Projeto Cabuçu

LOTEAMENTOS IRREGULARES, CLANDESTINOS E FAVELAS

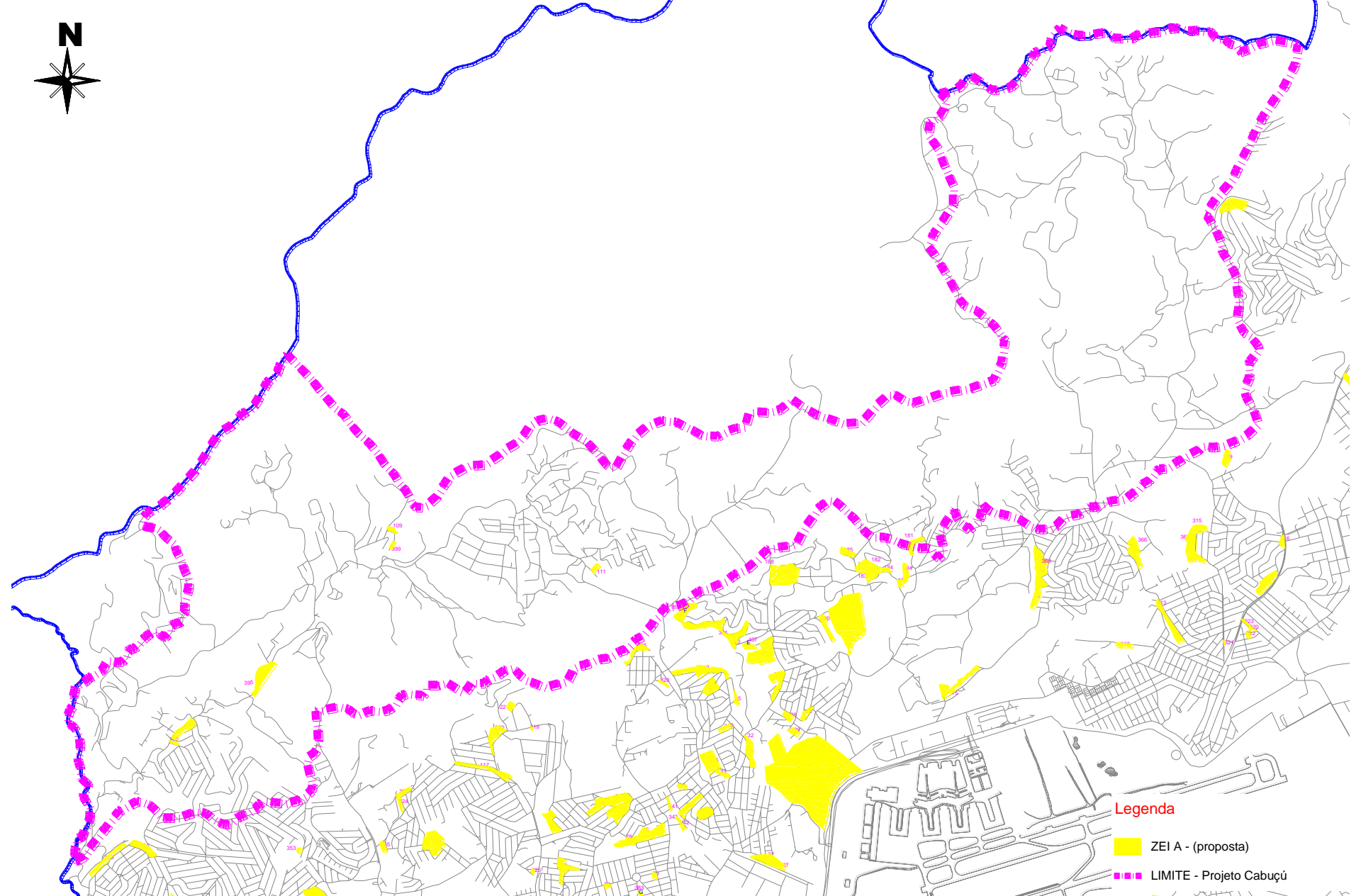


ZONEAMENTO ATUAL

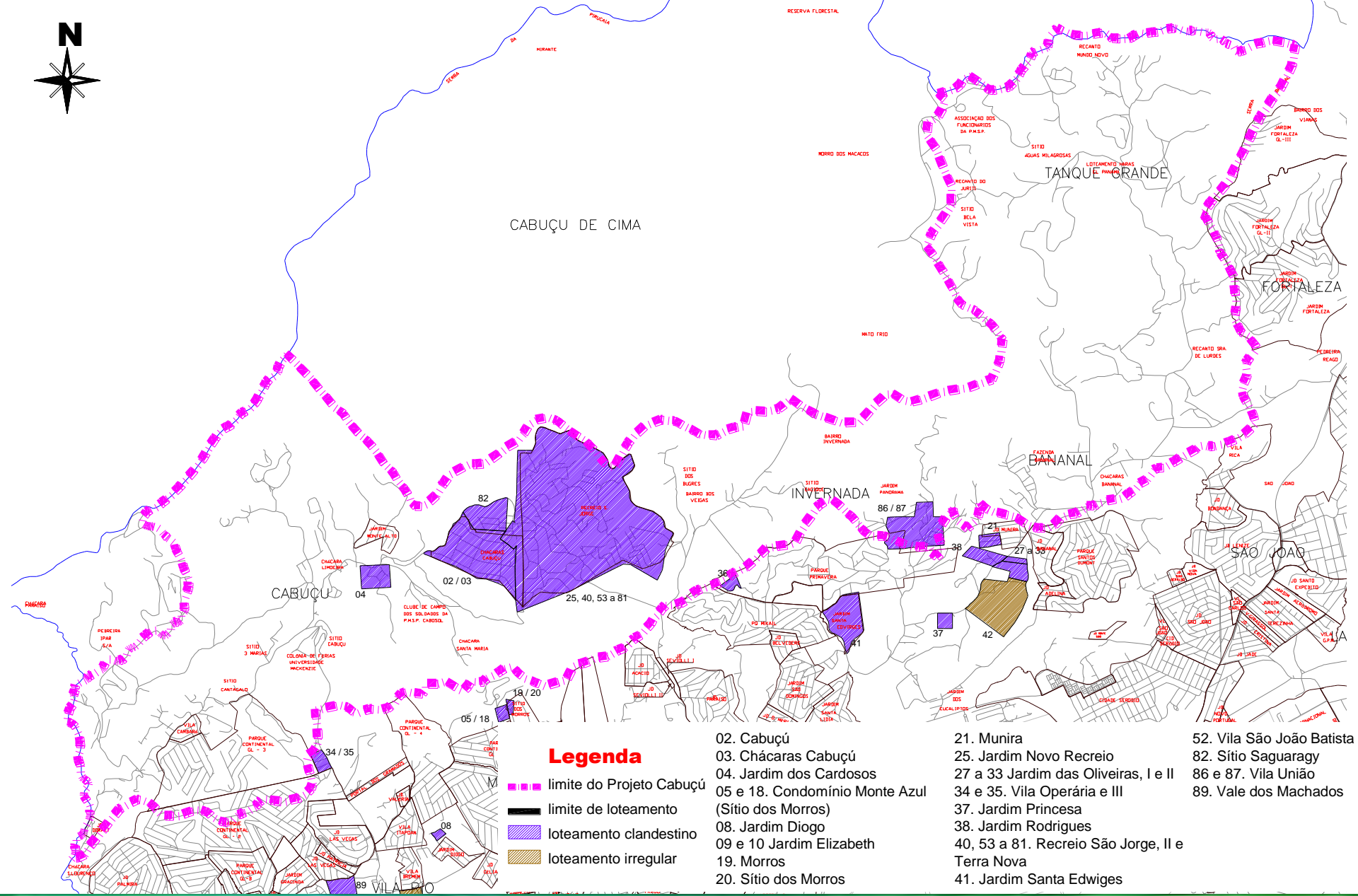
Lei Municipal nº 4.818/96



ZONEAMENTO proposto



ZEIS - A



CABUÇU DE CIMA

TANQUE GRANDE

INVERNADA





BANANAL

FORTALEZA

CABUÇU

SÃO JOÃO

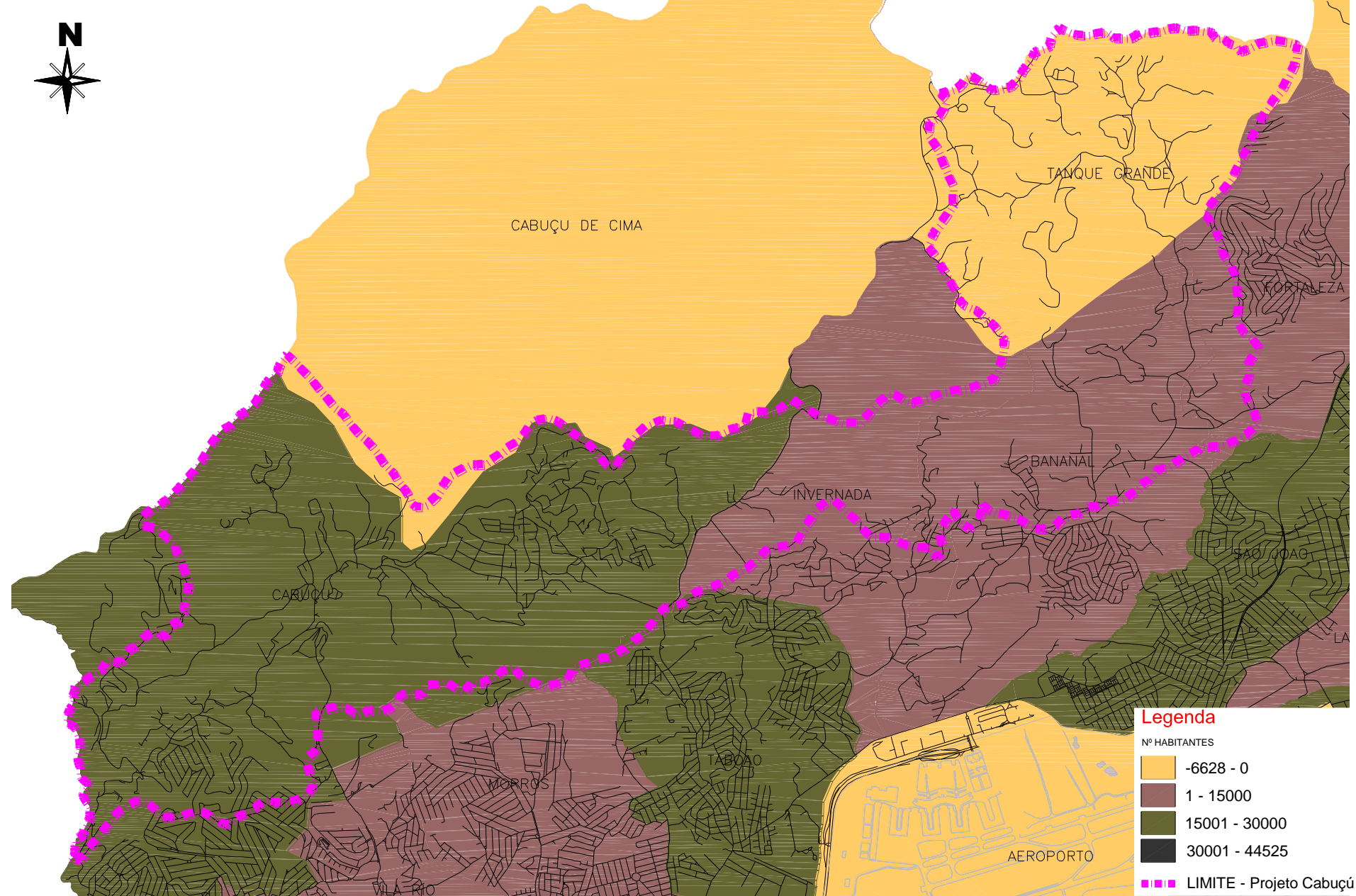
Legenda

-  limite do Projeto Cabuçu
-  limite de loteamento
-  loteamento clandestino
-  loteamento irregular

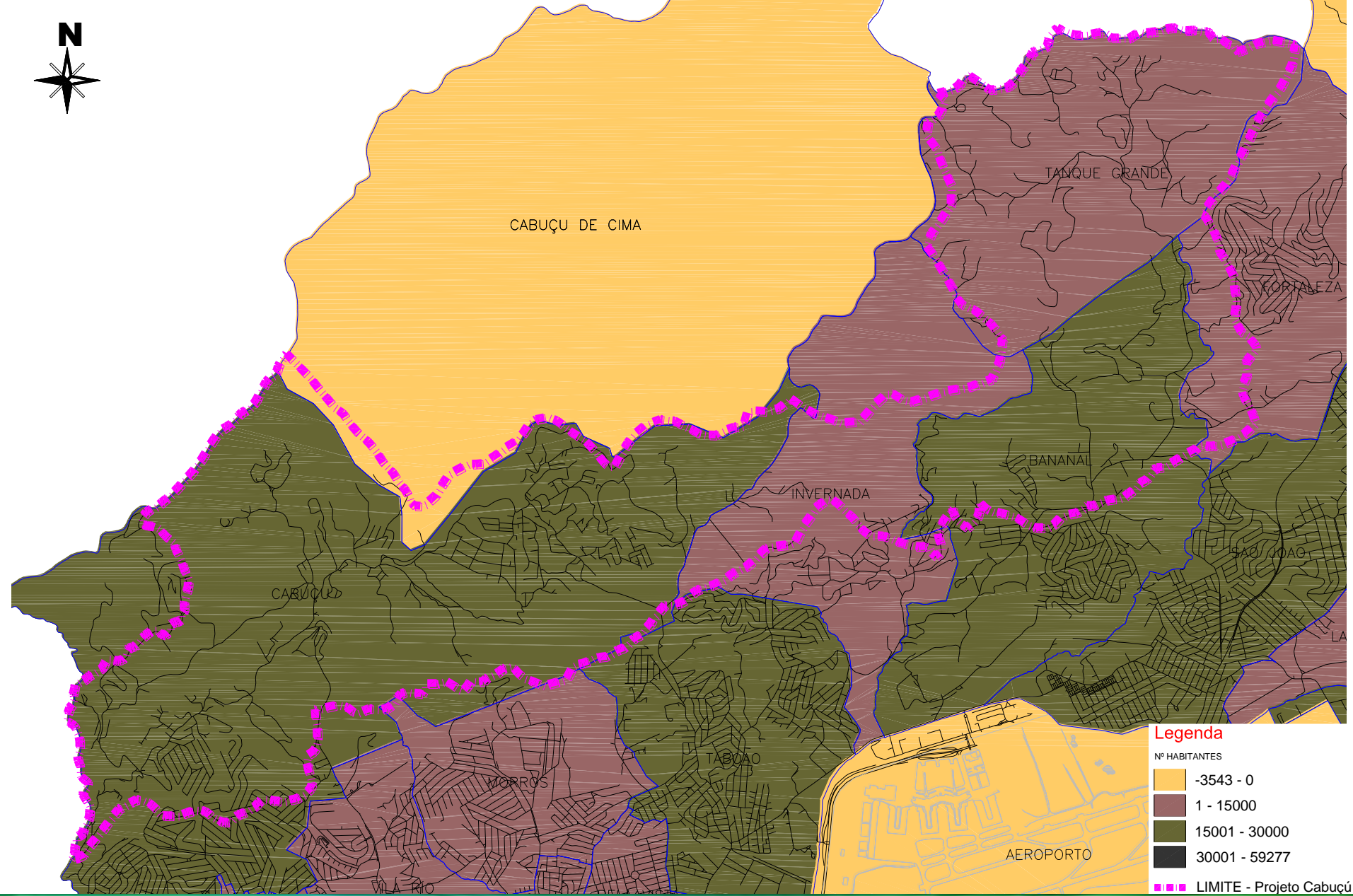
- 02. Cabuçu
- 03. Chácaras Cabuçu
- 04. Jardim dos Cardosos
- 05 e 18. Condomínio Monte Azul (Sítio dos Morros)
- 08. Jardim Diogo
- 09 e 10 Jardim Elizabeth
- 19. Morros
- 20. Sítio dos Morros
- 21. Munira
- 25. Jardim Novo Recreio
- 27 a 33 Jardim das Oliveiras, I e II
- 34 e 35. Vila Operária e III
- 37. Jardim Princesa
- 38. Jardim Rodrigues
- 40, 53 a 81. Recreio São Jorge, II e Terra Nova
- 41. Jardim Santa Edwiges

- 52. Vila São João Batista
- 82. Sítio Saguaragy
- 86 e 87. Vila União
- 89. Vale dos Machados

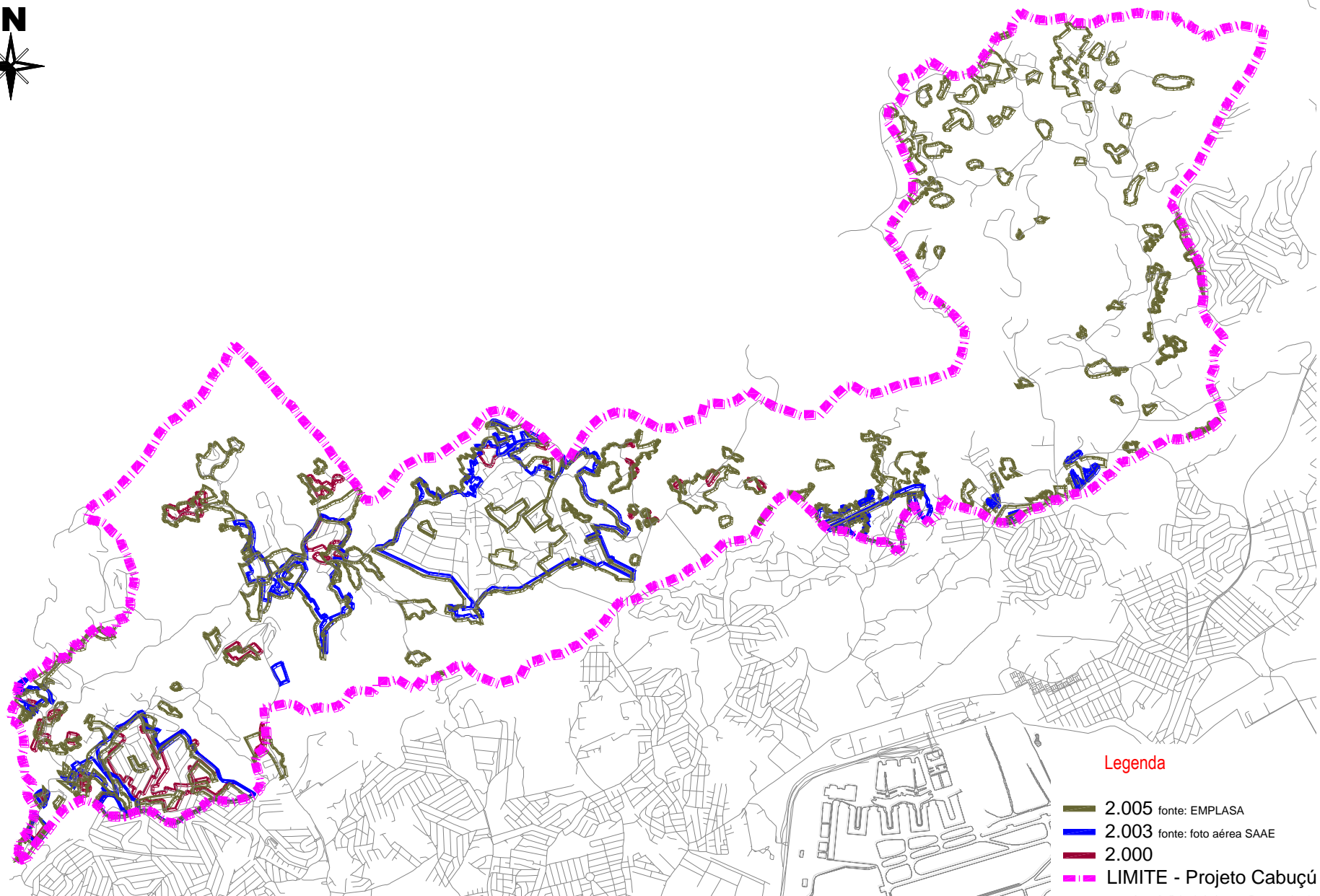
ZEIS - L



Incremento populacional de 1.980 a 1.991

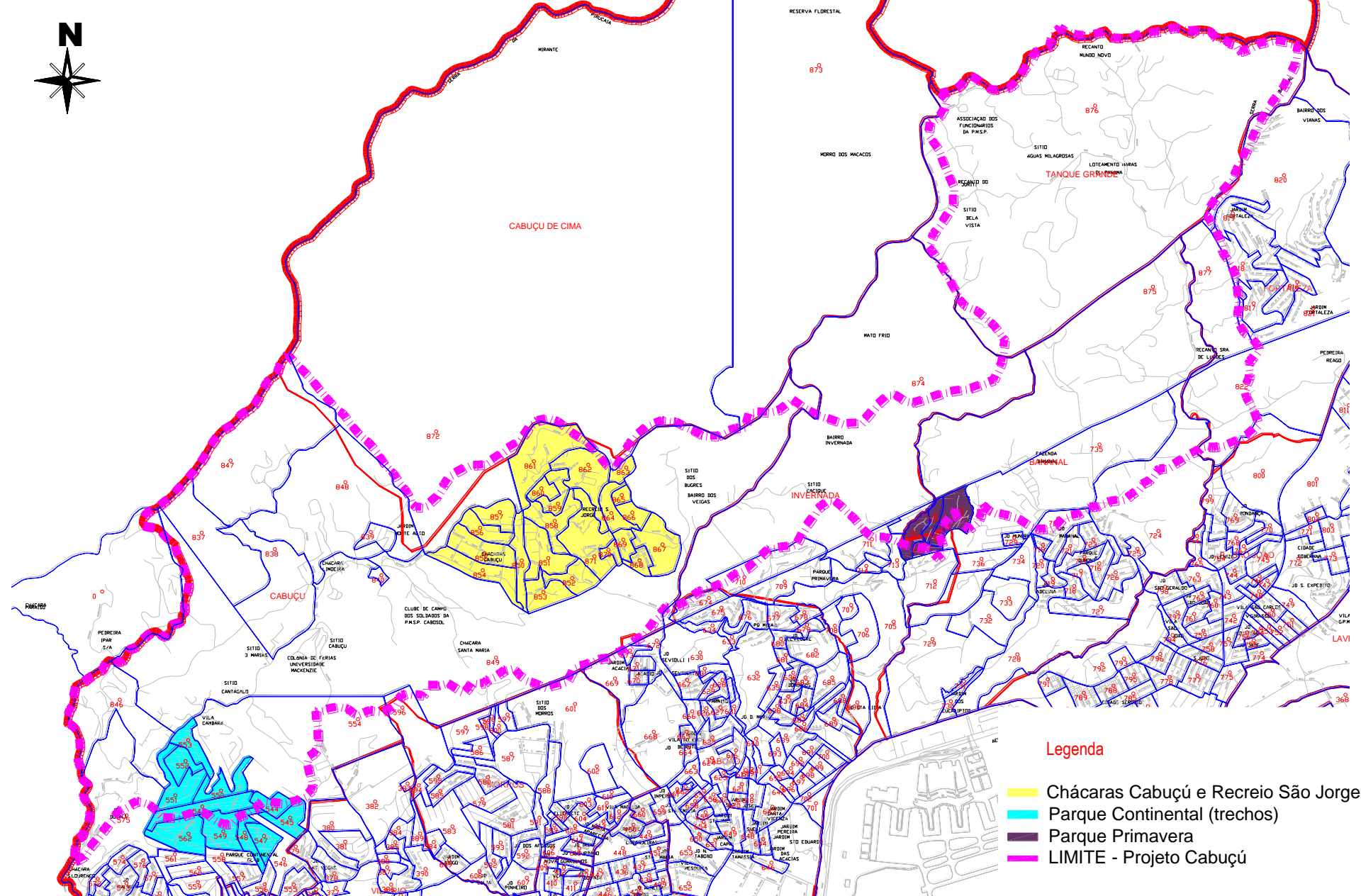


Incremento populacional de 1.991 a 2.000



Evolução urbana – 2.000/2.003/2.005

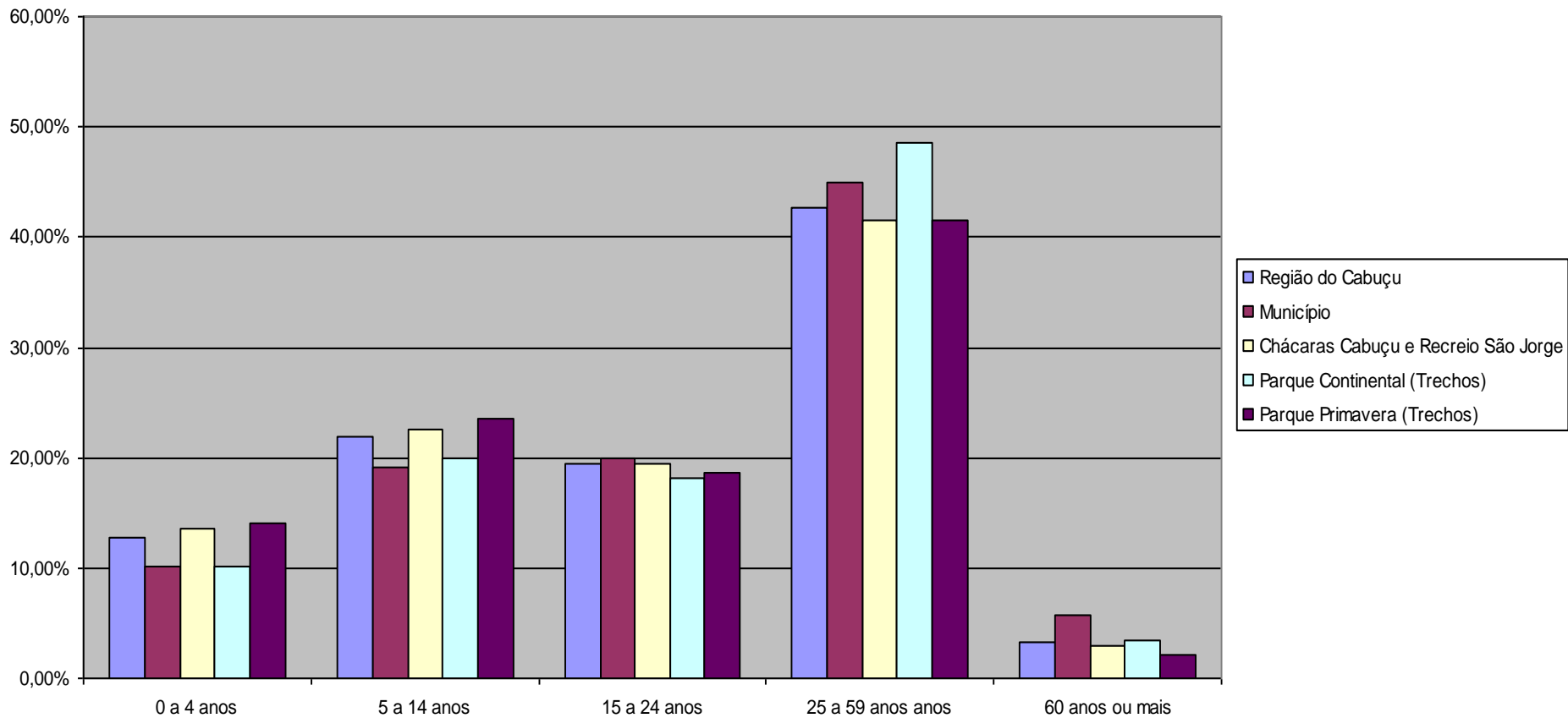
Dados sócio econômicos



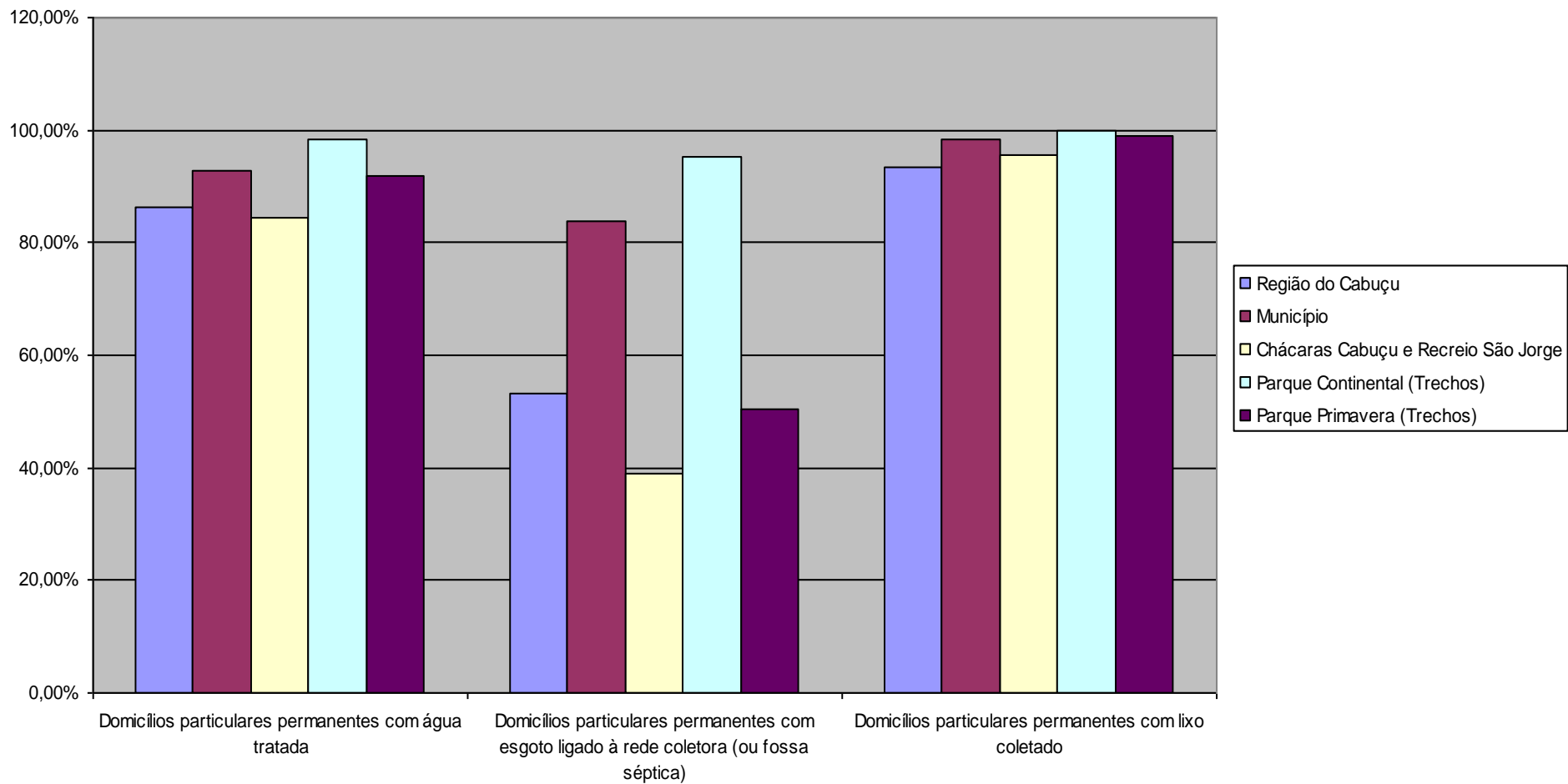
Legenda

- Chácaras Cabuçu e Recreio São Jorge
- Parque Continental (trechos)
- Parque Primavera
- LIMITE - Projeto Cabuçu

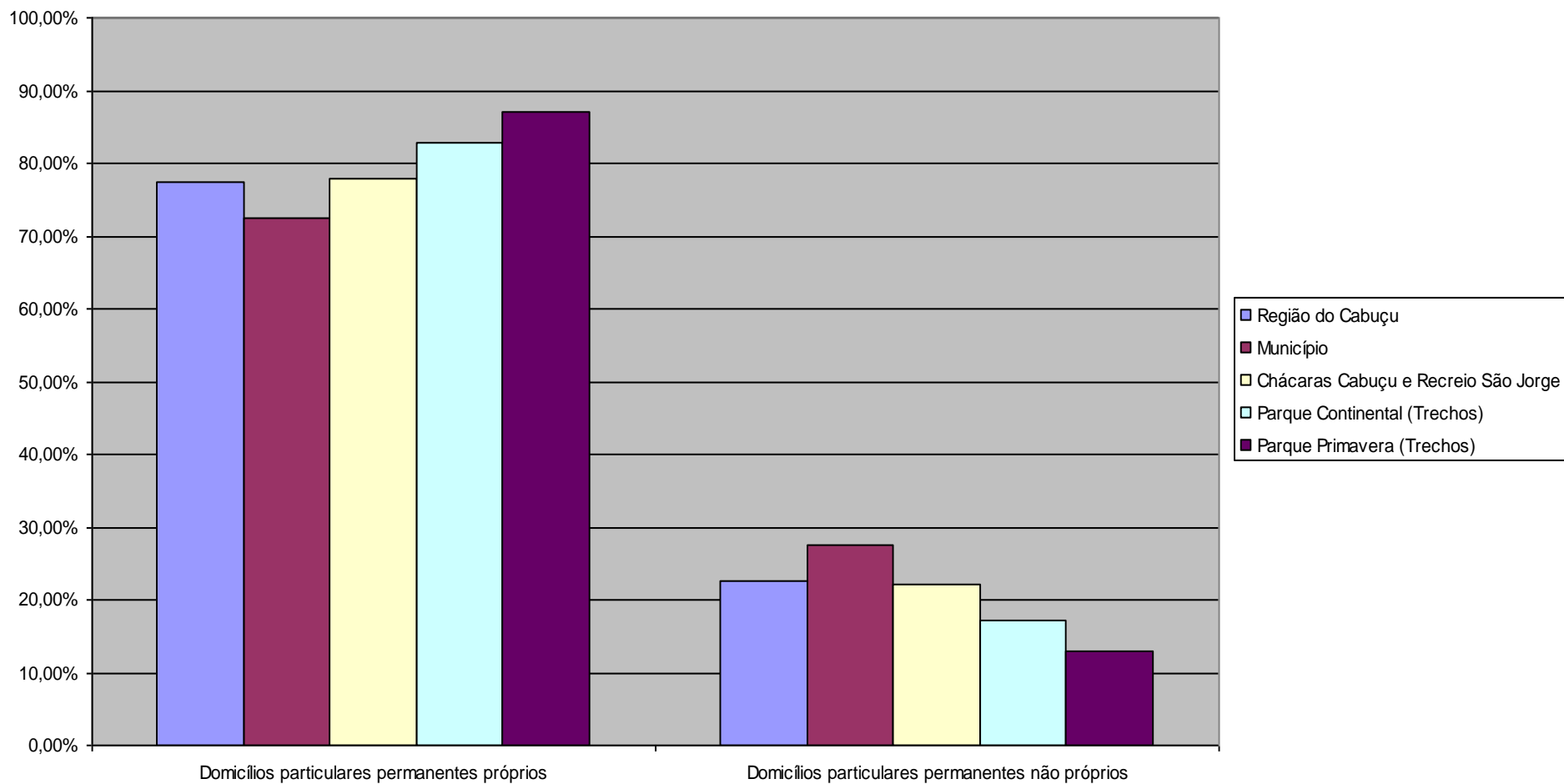
Áreas analisadas



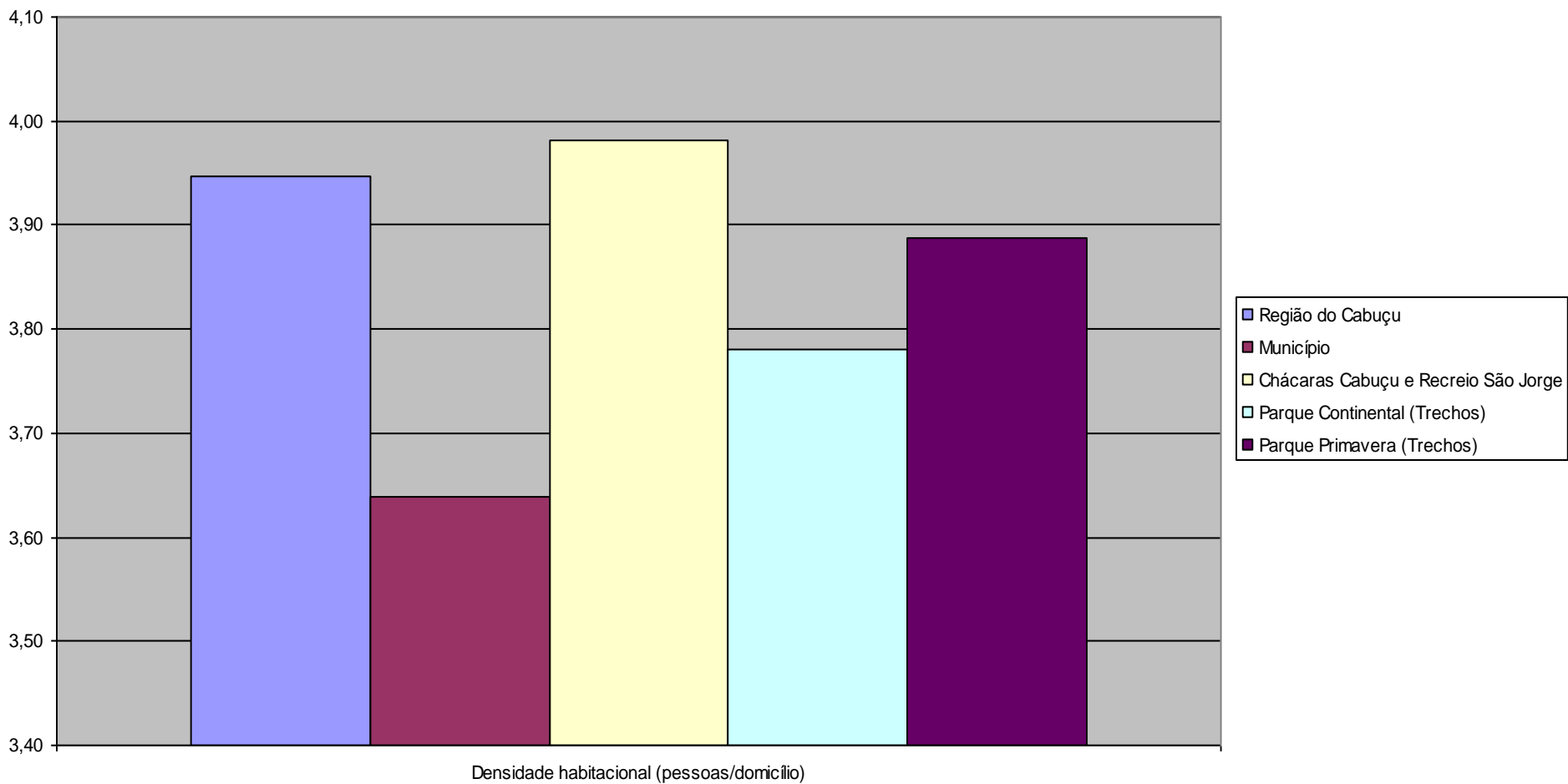
Faixa Etária



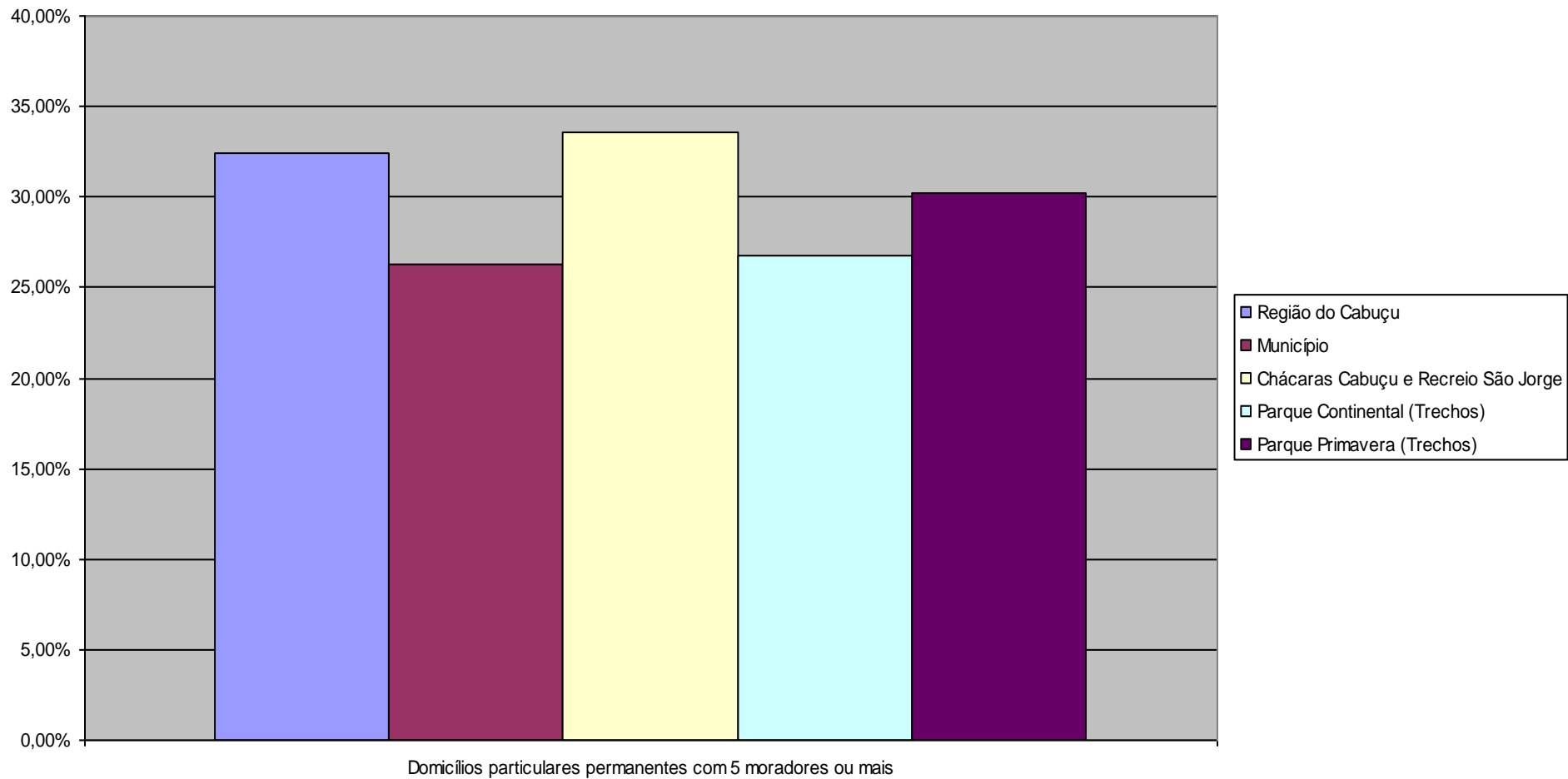
Infra-estrutura



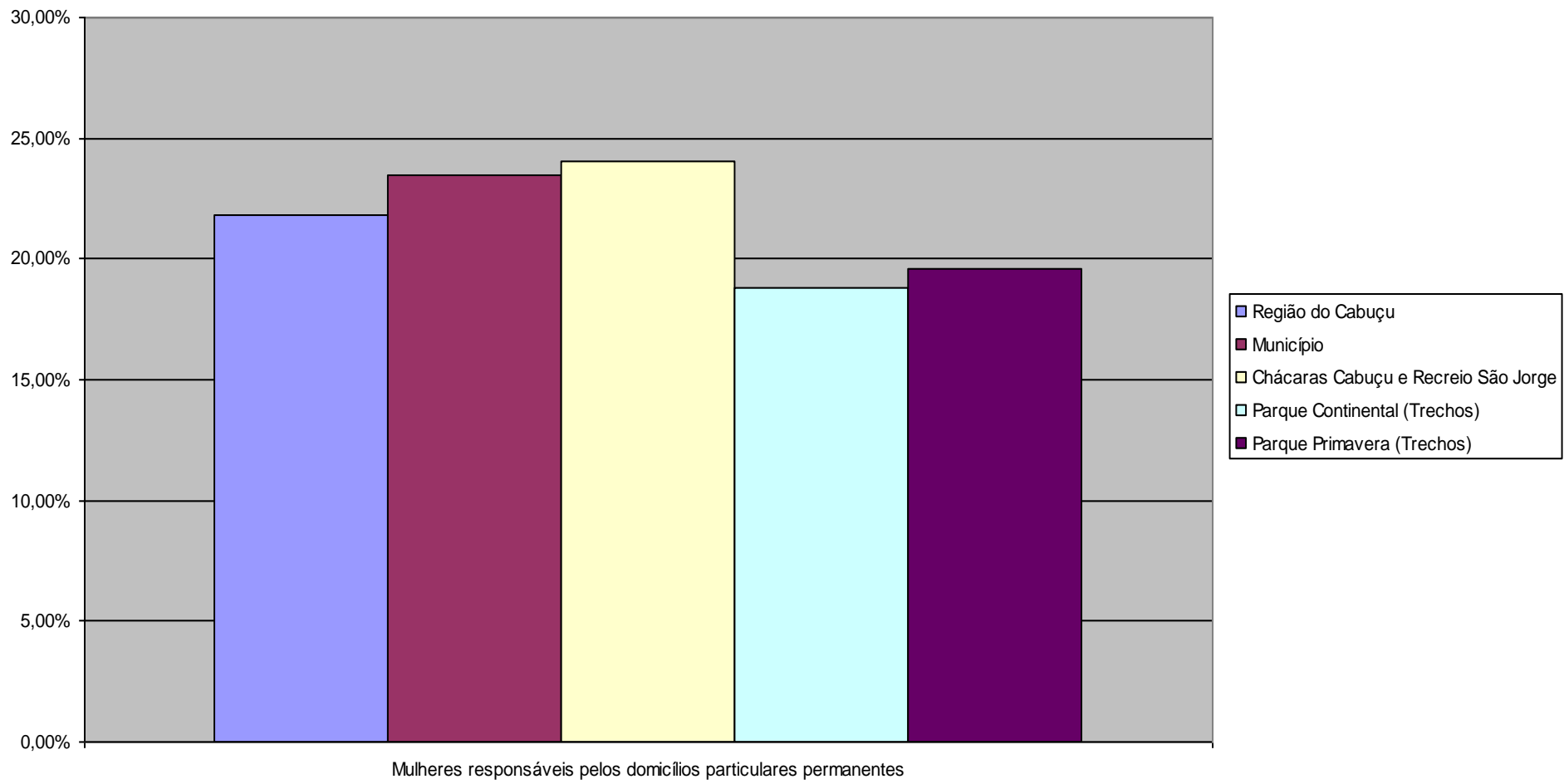
Condição de Ocupação dos Domicílios Particulares Permanentes



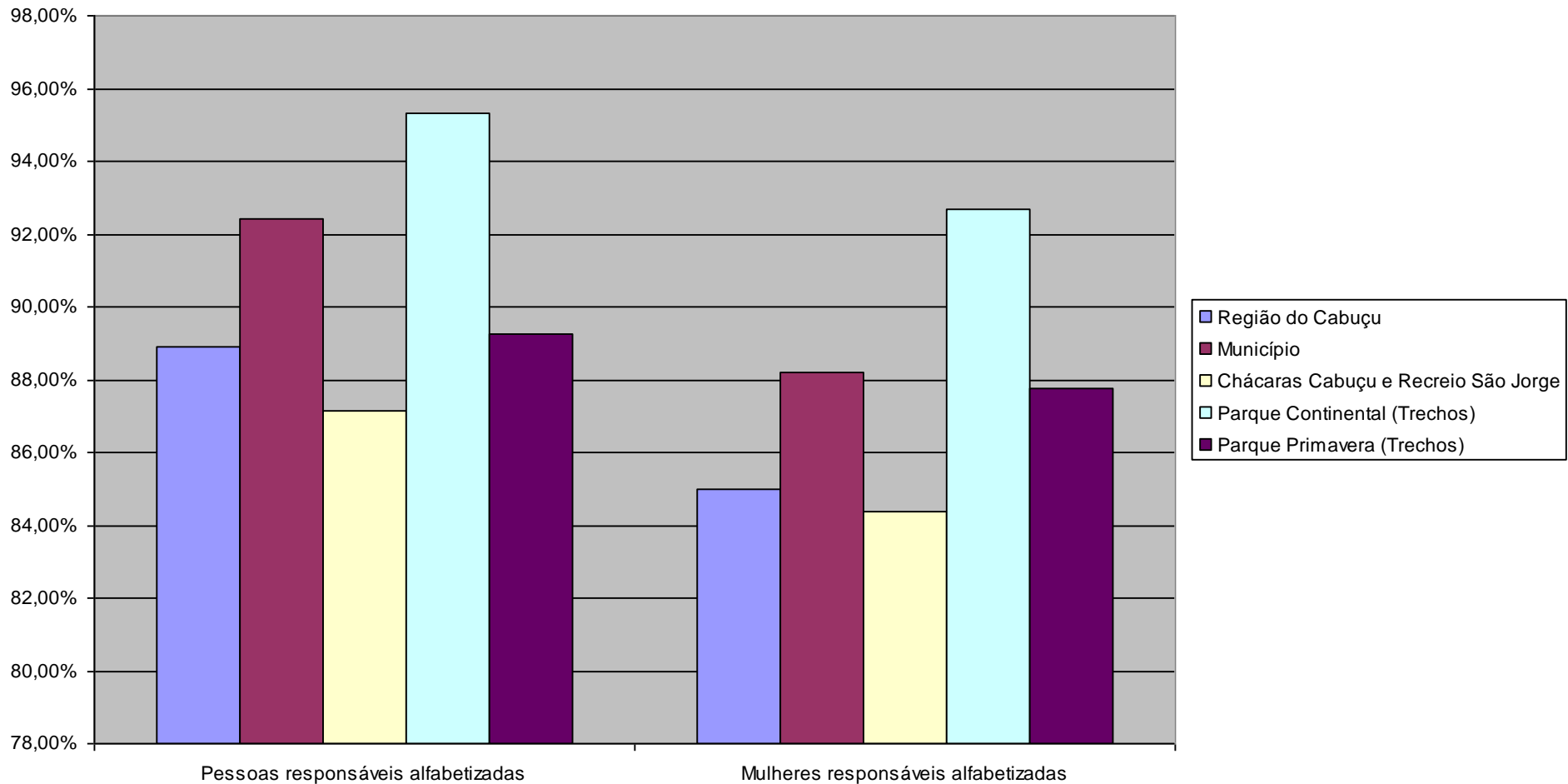
Densidade Habitacional - Número de Pessoas por Domicílio



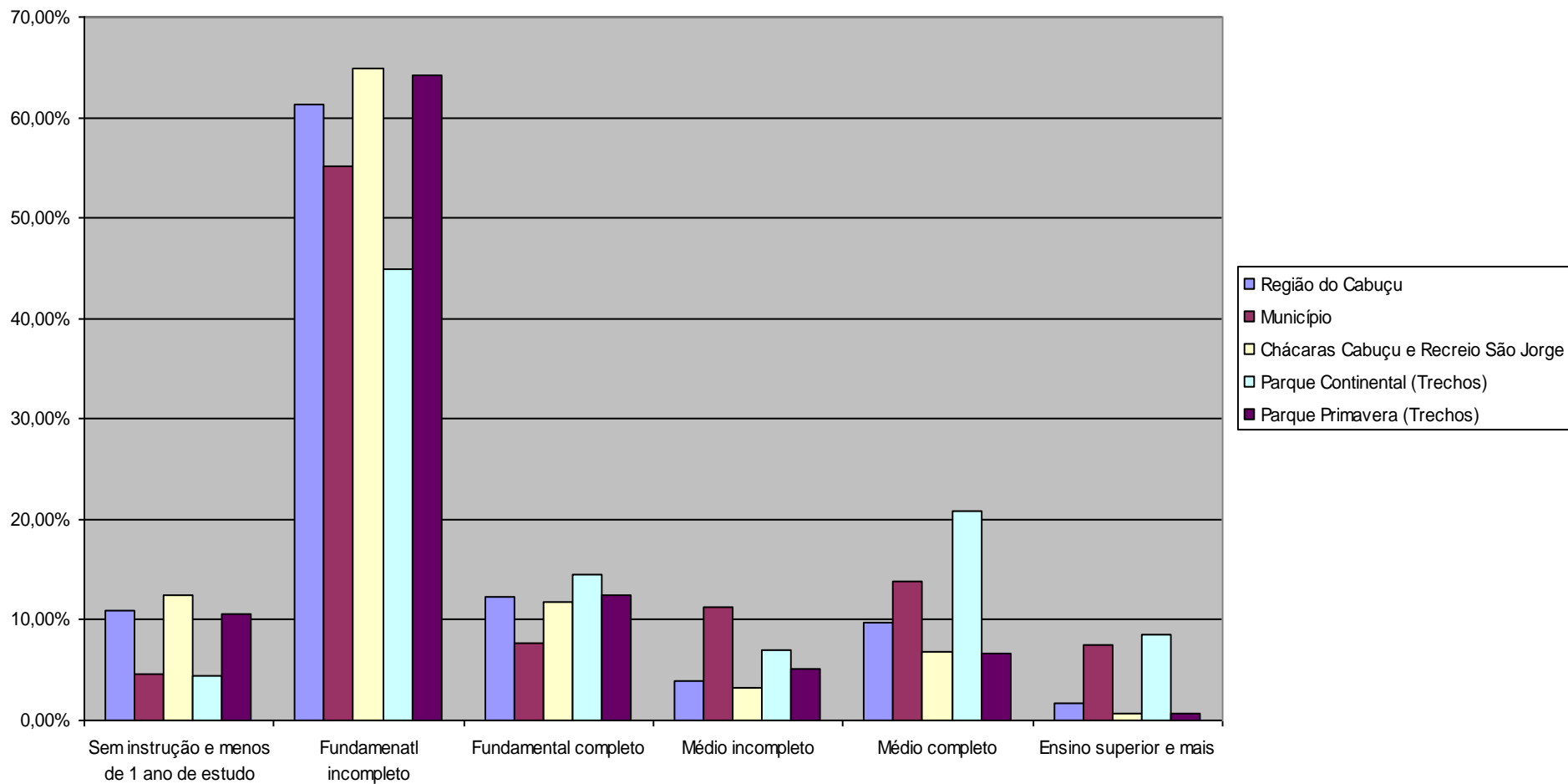
Domicílios particulares permanentes com 5 moradores ou mais



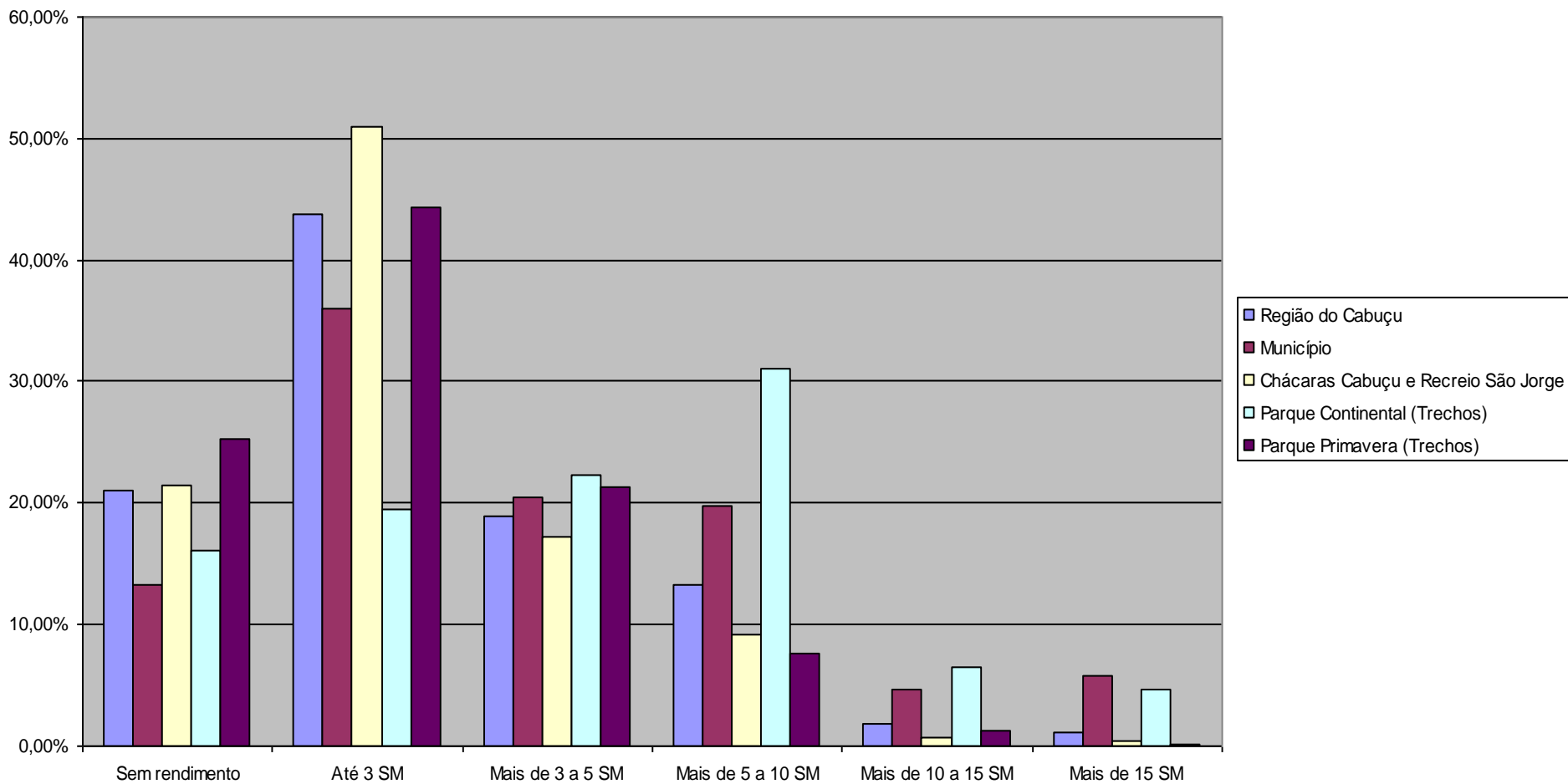
Mulheres chefe de domicílio



Responsáveis pelos Domicílios
Particulares Permanentes alfabetizados



Escolaridade dos Responsáveis pelos Domicílios Particulares Permanentes



Rendimento Mensal dos Responsáveis pelos Domicílios Particulares Permanentes